

CURVE DATA				CURVE DATA			
NO.	RADIUS	DELTA	LENGTH	NO.	RADIUS	DELTA	LENGTH
C32	82.50'	32°22'32"	46.62'	C38	2.50'	79°29'42"	3.47'
C33	82.50'	11°46'09"	16.95'	C39	88.00'	40°01'59"	61.49'
C34	82.50'	20°36'23"	29.67'	C40	2.50'	82°22'49"	3.60'
C35	67.00'	8°23'05"	9.81'	C41	133.00'	36°30'26"	84.74'
C36	152.00'	6°49'14"	18.09'				
C37	2.50'	107°52'44"	4.71'				

BASIS OF BEARING:

THE BEARING NORTH 28°11'26" WEST OF THE MONUMENT LINE OF FAIRVIEW AVENUE AS SHOWN ON RECORD OF SURVEY NO. 657, FILED SEPTEMBER 27, 1983 IN BOOK 12 OF RECORDS OF SURVEY AT PAGE 8, ALAMEDA COUNTY RECORDS, WAS TAKEN AS THE BASIS OF BEARING FOR THIS MAP.

NOTES

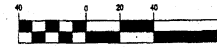
THE HEAVY BROKEN LINE INDICATES THE BOUNDARY OF LAND SUBDIVIDED BY THIS MAP. THE AREA WITHIN THE BOUNDARY IS 13.71 ACRES. ALL DISTANCES AND DIMENSIONS ARE SHOWN IN FEET AND DECIMALS THEREOF.

TRACT 6102

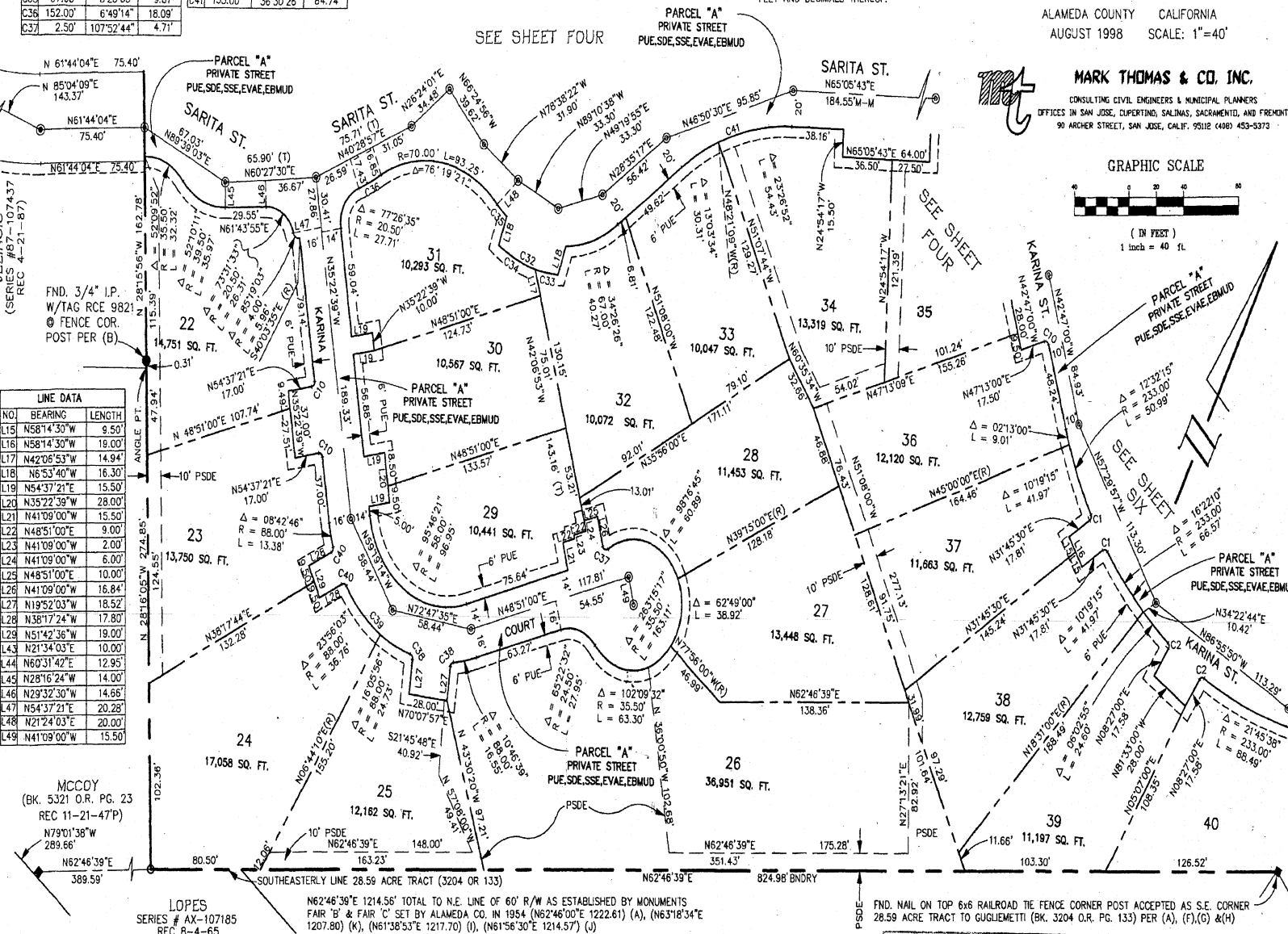
CONSISTING OF SIX SHEETS
EDEN TOWNSHIP
ALAMEDA COUNTY CALIFORNIA
AUGUST 1998 SCALE: 1"=40'

MARK THOMAS & CO., INC.
CONSULTING CIVIL ENGINEERS & MUNICIPAL PLANNERS
OFFICES IN SAN JOSE, EXPERTING, SALINAS, SACRAMENTO, AND FRESNO
90 ARCHER STREET, SAN JOSE, CALIF. 95112 (408) 453-5373

GRAPHIC SCALE



(IN FEET)
1 inch = 40 ft



LINE DATA		
NO.	BEARING	LENGTH
L15	N58°14'33"W	9.50'
L16	N58°14'30"W	10.00'
L17	N42°05'53"W	14.94'
L18	N6°53'40"W	16.30'
L19	N54°37'21"E	15.50'
L20	N35°22'39"W	28.00'
L21	N41°09'00"W	15.50'
L22	N48°51'00"E	9.00'
L23	N41°09'00"W	2.00'
L24	N41°09'00"W	6.00'
L25	N48°51'00"E	10.00'
L26	N41°09'00"W	16.84'
L27	N19°52'03"W	18.52'
L28	N38°17'24"W	17.80'
L29	N51°42'36"W	19.00'
L30	N21°34'03"E	10.00'
L31	N60°31'42"E	12.95'
L32	N28°16'24"W	14.00'
L33	N29°32'30"W	14.66'
L34	N54°37'21"E	20.28'
L35	N21°24'03"E	20.00'
L36	N41°09'00"W	15.50'

MCCOY
(BK. 5321 O.R. PG. 23
REC 11-21-47P)
N79°01'38"W
289.66'
N62°46'39"E
389.59'

LOPES
SERIES # AX-107185
REC 8-4-65

LEGEND

- ⊙ INDICATES ALAMEDA CO. STANDARD STREET MONUMENT FOUND AS NOTED
- ⊙ INDICATES ALAMEDA CO. STANDARD STREET MONUMENT SET
- ⊙ INDICATES IRON PIPE OR MONUMENT FOUND AS NOTED
- INDICATES 3/4" IRON PIPE SET RCE 14392
- INDICATES FENCE CORNER POST OR HUB FOUND AS NOTED
- PUE INDICATES PUBLIC UTILITY EASEMENT
- SSE INDICATES SANITARY SEWER EASEMENT
- (R) RADIAL
- SDE INDICATES STORM DRAIN EASEMENT
- PSSE INDICATES PRIVATE SANITARY SEWER EASEMENT
- PSDE INDICATES PRIVATE STORM DRAIN EASEMENT
- EVAE INDICATES EMERGENCY VEHICLE ACCESS EASEMENT
- EBMD INDICATES EAST BAY MUNICIPAL UTILITY DISTRICT
- () INDICATES RECORD DIMENSION IN DISCREPANCY WITH MEASURED, BEARING ROTATED TO BASIS OF BEARINGS
- (T) TOTAL

LOPES
SERIES # AX-037740
REC 3-19-65
RE 1461 IM 149

*** USE WITH CAUTION ***
THIS IS A PUBLIC WORKS DEPARTMENT
WORKING COPY OF AN OFFICIAL MAP
ON FILE IN THE OFFICE OF THE COUNTY
RECORDER, COUNTY OF ALAMEDA. OF-
FICE INFORMATION OR CALCULATIONS
MAY HAVE BEEN ADDED HEREOF.

TRACT 6102

MAP BK 250

Pg. 72